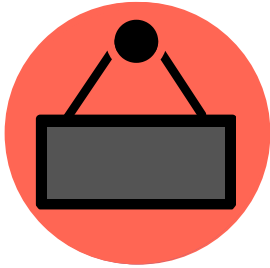
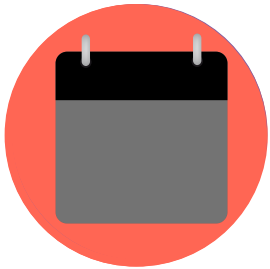


# SAVE THE DATE

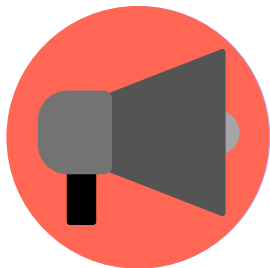
mark your calendars for scholarship season



**November 1**  
**Applications Open**



**February 15**  
**Applications Due**



**April & May**  
**Decisions Announced**

# FIND US



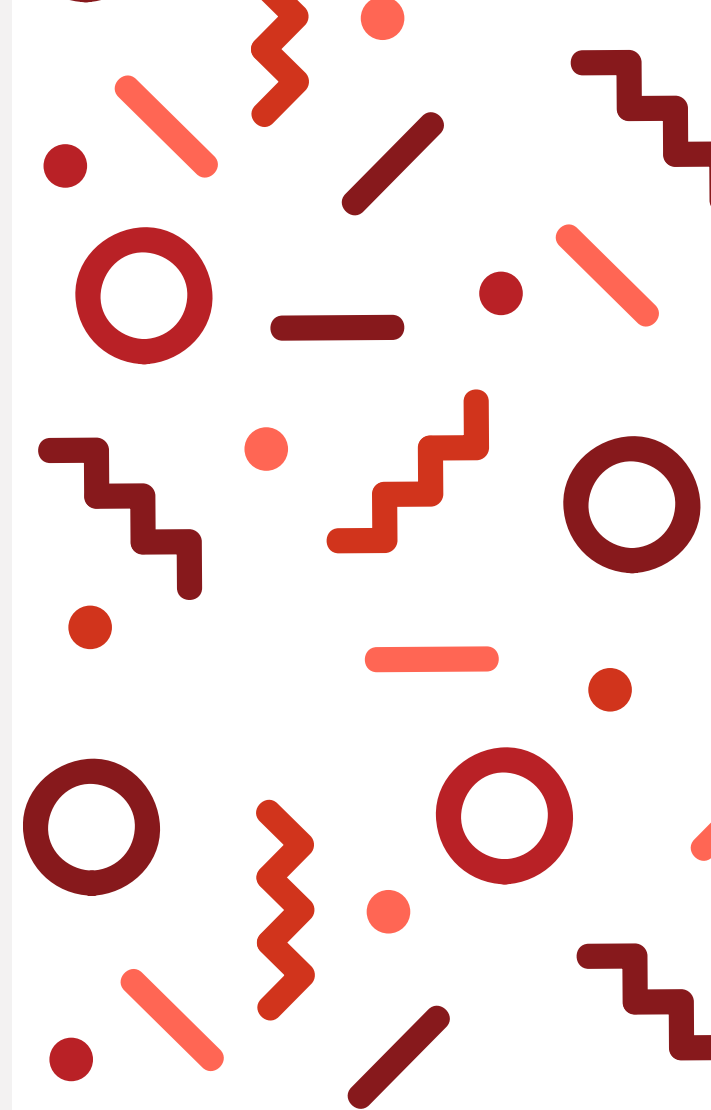
**FACEBOOK**  
**@CFforSmithCounty**



**WEBSITE**  
**[www.smithcountycommunityfoundation.org/](http://www.smithcountycommunityfoundation.org/)**



**TWITTER**  
**@GreaterSalinaCF**



# SCHOLARSHIPS

**A Guide for Students & Guardians**

# CHECK LIST



- Check out the community foundation's website
- Create an account/make sure you can login
- Take eligibility quiz
- Preview scholarships you are eligible for
- Request letters of recommendation if required
- Fill out all required fields within application(s)
- Submit application(s)
- Check email for a decision notice
- Complete follow ups if awarded a scholarship

## PREPARE

- Check out our website! The "Scholarships" tab is a great place to start!
- Mark all due dates on a calendar.
- Start thinking about who you might ask to write you a letter of recommendation.
- It is a good idea to update your resume, round up transcripts (official or unofficial), and find your Student Aid Report.

## APPLY

- Applications are submitted through our online system. You can access it by going to our website and clicking the "Scholarships" tab.
- First time users will click "Take the Assessment" button to create an account and take our eligibility quiz.
- Once logged in, you will be able to hit the home icon to access your Applicant Dashboard and the "Apply" tab to find new scholarship opportunities.

## ACCEPT

- You will be notified via email if you have received a scholarship. To accept, log back into the online portal and hit the home icon to access your Applicant Dashboard. There, you will be asked to submit an acceptance form, photo, and thank you note.

# FAQs

## How do I get to the online scholarship portal?

[gscf.org/scholarshipapplication](https://gscf.org/scholarshipapplication)

## Can I apply for more than one scholarship?

You are encouraged to apply for all of the scholarships in which you meet eligibility requirements. Additionally, you may receive awards for multiple scholarships.

## When should I request letters of recommendations by?

While not required by the Foundation, it is standard to ask recommenders at least two weeks before the submission deadline.

## What if I forgot my login password?

Visit the scholarship portal and click "Forgot Password" at the bottom of the screen. You will be prompted to enter your email. Once entered, a recovery link will be sent to you.

## What are some application tips?

For tips, please visit the "Scholarships" tab on our website.

**FOR MORE FAQs AND TUTORIALS, VISIT OUR WEBSITE!**